

Work with the best.

# NEWSLETTER 41

August 2017

**PB** SWISS TOOLS

**Dear Readers,**

The value of each tool is determined by users who want to successfully and quickly carry out their demanding tasks: The expert in Japan, who tests our new copper mallets and enthusiastically recommends them to his colleagues (see last page). The plant electricians who want to carry out demanding work while exclusively using our quality tools during the WorldSkills Competition in Abu Dhabi.

You too will also test and evaluate our new turning and striking tools according to your personal criteria. For others, your communicated findings will be authentic and credible: With «Content Marketing», we are better able to reach younger generations.

They are interested in our sustainable processes and collaborative robots, which support our employees productively. With respect to people and technology, we work in an environmentally friendly manner and according to international regulations. That is why our company was recertified and acclaimed a few days ago according to the new international ISO standards:

- Quality Management ISO 9001 : 2015
- Environmental Management ISO 14001 : 2015
- Medical Devices ISO 13485 : 2016
- Directive 93/42/EEC Appendix II, FSC STD 40-004 3.0

**Work with the best.**

With kind regards,



**Eva Jaisli**

CEO, Chief Executive Officer  
e.jaisli@pbswissertools.com

HOFFMANN EXHIBITION IN ODELZHAUSEN

## MEETING POINT: SCREW-DRIVING STATION

At the end of June, we participated at the «World of Tools 2017» exhibition of the Hoffmann Group in Germany.

Our screw-driving station was a real highlight – and it was not just for show: Visitors were able to try out different screw profiles and screwdrivers for themselves at the screw-driving station. In doing so, they were also doing something good: For each screw that was driven, PB Swiss Tools made a contribution to the foundation of our sales partner. Under the motto «Tools create value», our sales partner supports institutions that promote the development of disadvantaged and traumatized children and adolescents.



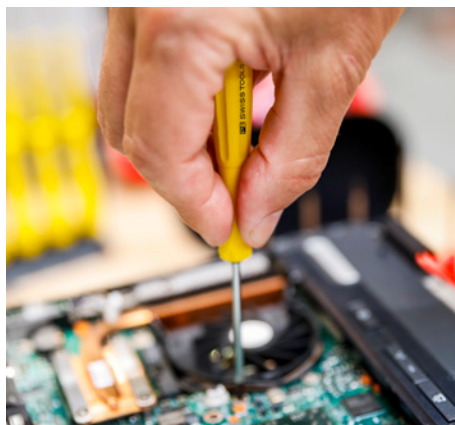
You can see more pictures from  
the exhibition at:  
[pbswissertools.com/qr/odelzhausen/en](http://pbswissertools.com/qr/odelzhausen/en)

NEW

## ELECTRONICS SCREWDRIVERS

# THE PERFECT TURN FOR PRECISION

We developed our new precision screwdriver line specifically for use in precision mechanics and electronics. Our line includes all the common screw profiles and sizes for these technical areas. The new screwdrivers are available individually, in a set or as a set in a self-service package – and also in ESD versions.



ESD: Electrostatic discharge  
EPA: Electrostatically protected area  
EGB: Electrostatically sensitive components

### Perfect fit

Thanks to the precisely manufactured tips, the tool fits perfectly in the screw head. The tough special alloy allows an extremely high loading capacity, especially for small dimensions.

### Back to the roots

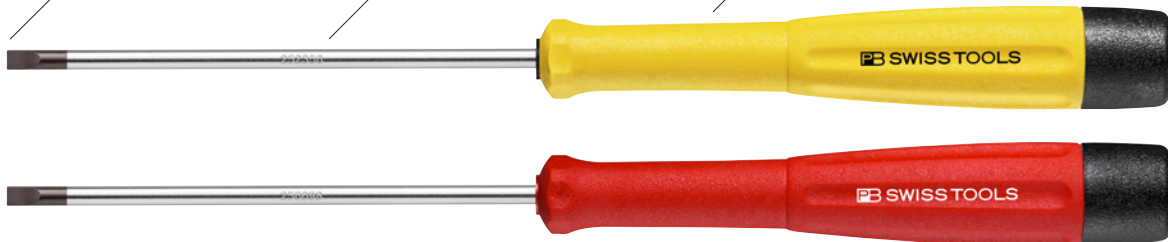
The serial number makes it possible to trace all of the production steps, all the way down to the raw materials.

### Ergonomic working

The slim handle is ideal for precision work and for use in electronics. Thanks to the round neck, adjustment work can also be carried out precisely.



ESD



Color Code

Twist cap



## THE RIGHT SHAPE AND SIZE FOR EVERY APPLICATION IT'S ALL IN THE HANDLE

When using electronic screwdrivers, small amounts of torque are mainly used. The grooves integrated into the handle are an orientation aid for the user when tightening and loosening screws. And when it takes longer than usual, the Santoprene® surface provides a comfortable grip and efficient, fatigue-free use, even if the work takes a long time.

### That's how it's made

The upper part of the handle has a twist cap. This makes it easier for you to use the handle for different tasks, namely the following:



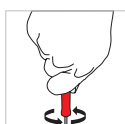
#### Adjusting

For the finest adjustments, keep your pointer finger firmly in place on the cap and turn the handle with two fingers.



#### Turning in and turning out

Fast turning and targeted force transmission can be achieved by supporting your hand on the twist cap.



#### Tightening and loosening

If the screw is tightened slightly or must be tightened some more, put your entire hand around the handle. You will immediately feel the transmission of force.








#### Flexible table and wall bracket

The bracket can be attached to a wall or used on a table. This means that the screwdrivers are arranged clearly in every situation and are easy to remove.

### ColorCode: A glance is enough!

Thanks to color coding, you quickly have the right tool at hand: ColorCode supports visual perception, so that you can immediately recognize the profile you are looking for. Our new screwdrivers are also equipped with the ColorCode.

#### Color coding according to screw profile

Slot	 0.8 / 1.0 / <b>1.2</b> / 1.5 / 1.8 / <b>2.0</b> / 2.5 / 3.0 / 3.5
Phillips	 000 / <b>00</b> / 0 / 1
Hexagon socket	 <b>0.71</b> / 0.89 / 1.27 / 1.5 / 2 / 2.5 / 3
For Torx® screws	 <b>3</b> / 4 / 5
	 <b>6</b> / 7 / 8 / 9 / 10 / 15
Hexagon head	 <b>5</b>
Pentalobe For use with Apple® Products	 <b>0.8</b> / 1.2

#### ESD

Bold printed sizes also available in ESD (electrostatic discharge) versions.



Everything is here: Our catalog presents our complete range of tools with all the details.  
**Order one now at no charge!**



One glance, one reach: The right tool is quickly at your fingertips thanks to color coding according to screw profile.





Murakami Seiki, Japan, Metalworking Company



Horiuchi Kikai, Japan, Manufacturer of Hydraulic Cylinders

## DEAD-BLOW MALLETS WORTH THE PRICE!

Are end customers willing to pay more for quality? Various companies from Japan reported on the acceptance of our dead-blow mallets with copper heads.

Dead-blow mallets with copper heads have long been in great demand with end customers in Japan. In the present example, they are mainly used for aligning workpieces during milling processes. In order not to damage workpieces made of steel, they must not be struck with steel mallets.

### The results are impressive

Until now, end customers mainly used lower-priced copper mallets from other manufacturers. The mallet heads could not be replaced. In testing procedures, users convinced themselves of the advantages of PB Swiss Tools innovations: «The processing of the workpieces is simpler and more efficient. In a shorter period of time, significantly more workpieces can be processed very precisely and with high quality», say the users.

### The added value is worth it

The dead-blow copper head mallet with the fiberglass handle (Item No. PB 308 Cu) is the most popular product at Horiuchi Kikai because of its durability and precision. Experience teaches us that «by using it, the exact and gentle transmission of force takes place without fail. This leads to lower failure rates and better results».



PB 306 Cu

PB 308 Cu

When working with striking tools, wear safety goggles!

### Coming soon:



**worldskills**  
AbuDhabi2017

Plant electrician Simon Furrer will represent Switzerland at the WorldSkills Competition from October 14–19, 2017, in Abu Dhabi.

In our next newsletter, read about how he prepared himself – and which goals he is setting.