



NEWSLETTER 43

August 2018

PB SWISS TOOLS

Dear Readers

Our **Swiss Quality Innovation** has left its mark on the global hand-tools market – for 140 years now. We draw inspiration for new products and applications from our partners and end-users in industry, the trades and medical technology institutions. We enlist the best experts to turn ideas into solutions. We incorporate their knowledge from research and development in our tool solutions. One result of this is that we can now offer our second generation electrician's screwdrivers and soon there will be our **torque screwdriver** with unequivocal benefits.

Our natural surroundings power our untiring dedication to work. Nature's sustainable approach is reflected in the way we constantly improve our tools and develop new ones in our Swiss production facilities.

As a dependable brand-name manufacturer and niche provider in the global marketplace we will meet our customers' highest expectations worldwide with innovative solutions, now and in the future.

Work with the best.

Best regards

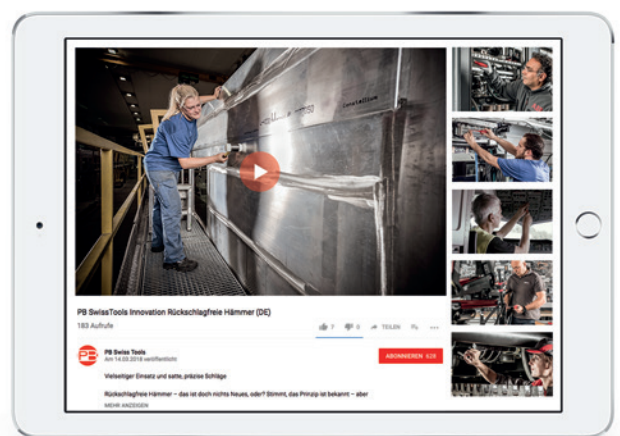
Eva Jaisli

CEO, Chief Executive Officer
e.jaisli@pbswisstools.com

TOOLS IN ACTION

BREATHTAKING VIDEOS

Experience our tools in use: these videos illustrate how they are deployed in various sectors, industries and applications.



www.pbswisstools.com/en/videos

MM, KNURLED

SAFETY HEX KEY L-WRENCHES



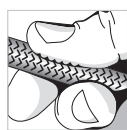
NEW

The knurled shaft improves grip in wet or oily environments, providing for increased safety in the work environment. The round shaft ensures much prolonged service life and greater fatigue strength of the tools.

Available as individual items or in sets.



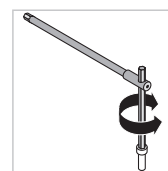
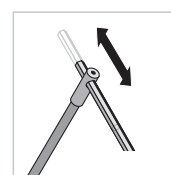
Ball head enables work angles of up to 30°



Better grip thanks to the knurled shaft

SAFETY AND VERSATILITY

SLIDING T-BAR HANDLE



The sliding T-bar with its three hexagonal tips is ideally suited to applying higher torques. The T-bar slides and has endstops at both ends, delivering optimum handling in every tightening situation.

All inclusive

One tool with three different advantages:

- Fast tightening & loosening
- Application of high torques
- Access to deeply recessed screwheads

Reliably safe in use and universally applicable.

TEST REPORTS FROM THE WEB



Video: from **Woodworks**
(German)



Report from **diy_don_germany**
(German)



Report from **_ratstar_** Josh Sneed/Whole Athlete
(English)



Video and report from **jonas_winkler_design**
(English)



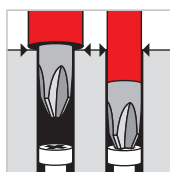
INNOVATION

CLASSIC VDE SLIM SCREWDRIVER

Super-slim shank in the front third. This makes it easier and safer for the blade of the PB Swiss Tools Classic VDE Slim electrician's screwdriver to access even well-recessed screw-heads and spring-loaded elements.

The elastomer coating covering the slim polypropylene handle has good grip qualities and is pleasantly skin-friendly. That is why our Classic VDE Slim is so pleasant to handle. High-end tools for professionals. Fully insulated up to 1000 volts to IEC/EN 60900.

Available as individual items or in sets.



Slim

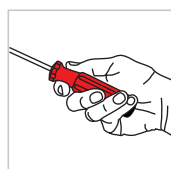
Well-recessed screwheads and spring-loaded elements easily and safely accessible



TESTED

Safety

Fully-insulated to 1000 volts to IEC/EN 60900

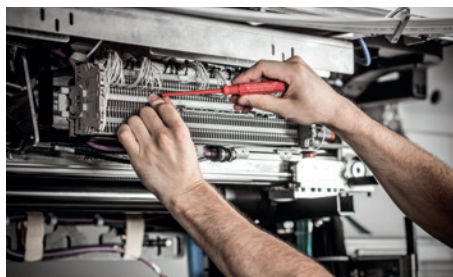


Ergonomics

Impact-resistant polypropylene with an elastomer sheath: firm and safe to grip



A quick look, quick action: The right tool is quickly available thanks to color coding according to the screw symbol and size..



Video: VDE screwdrivers in use with Stadler Rail, Bussnang, Switzerland
Product film

NEW

SWISSGRIP VDE SCREWDRIVERS

The new PB Swiss Tools SwissGrip VDE electricians' screwdriver transmits force from the hand to the screw even better. The right force, accurately transmitted, thanks to its specially designed shape in connection with the skin-friendly elastomer coating over the resilient polypropylene core.

When things get "live". This is why the tool is fully insulated from the grip down to the blade tip up to 1000 volts to IEC/EN 60900.

Available as individual items or in sets.



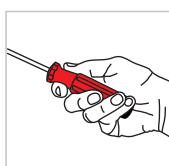
Power grip

Proportioned and precise force transmission from your hand to the screw



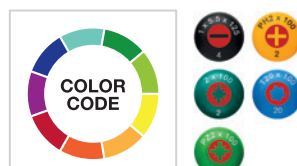
Safety

Fully-insulated to 1000 volts to IEC/EN 60900

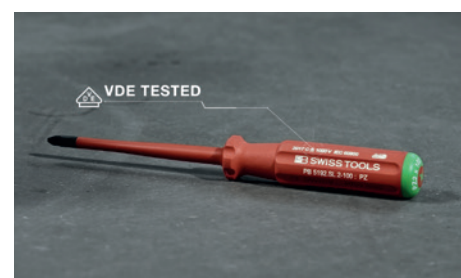
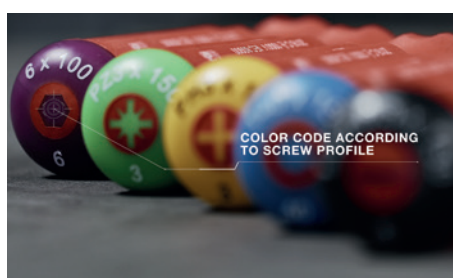


Ergonomics

Impact-resistant polypropylene with an elastomer coating: firm and safe to grip



One glimpse, one reach: The right tool is quickly available thanks to color coding according to the screw symbol and size.



Video: Safe, nonslip, VDE tested
Application film